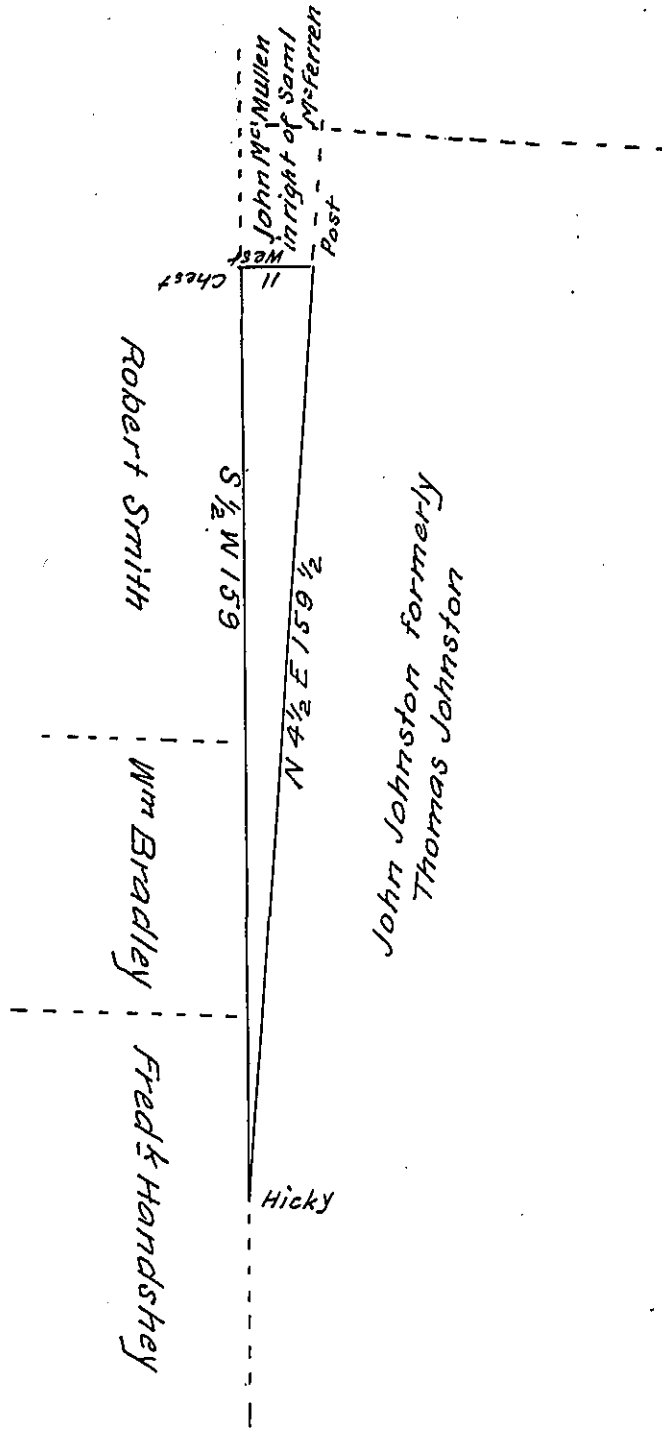


FORM NO 1.



*Draught of a Tract or peice of Land Situate in Montgomery Town-
 ship Franklin County Containing Five acres and twenty six perches
 and allowance of Six & Cent for roads &c &c Surveyed 18th
 day of June 1814 In pursuance of a Warrant Granted
 Fredk Handshey for 10^a Dated 2nd day of June 1814
 Rich^d T. Leech Esq^r
 Surveyor General*

Archibald Fleming D.S.

*NB The above is claimed by John Johnston a a part of a Tract
 Resurveyed March 22nd 1775 Containing 455^a 135^p. On a
 Warrant Granted Thomas Johnston Jun^r for 400^a Dated
 20th of Nov 1753*

*IN TESTIMONY that the above is a copy of the original remaining on file in
 the Department of Internal Affairs of Pennsylvania, made
 conformably to an Act of Assembly approved the 16th day of
 February, 1833, I have hereunto set my Hand and caused
 the Seal of said Department to be affixed at Harrisburg,
 this twenty seventh day of November 1907.*

Newry Howard
 Secretary of Internal Affairs.